

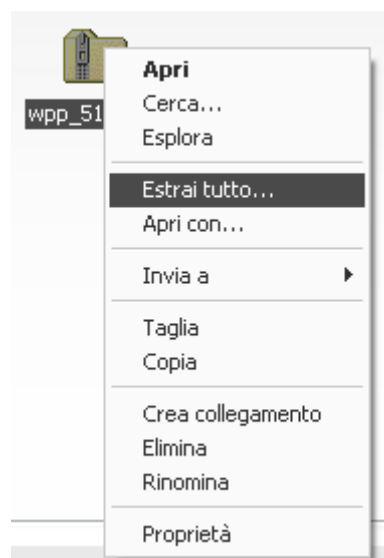


## User Guide

### 1. Download and setup

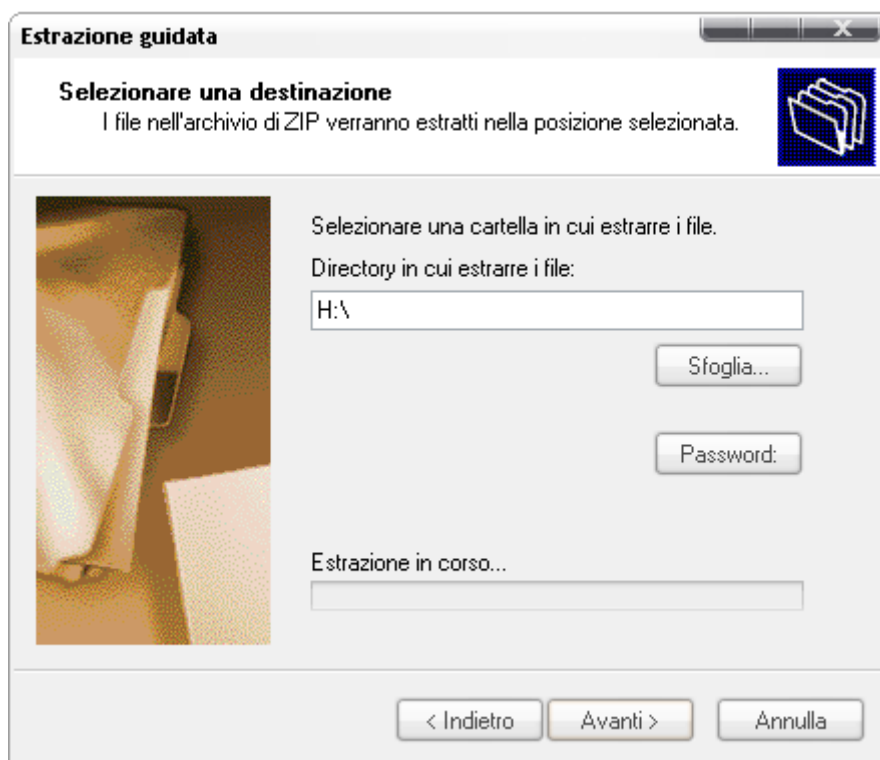
Once you have downloaded one of the **winPenPack** editions from the [Download](#) section, you need to extract program files and dirs using a common compression/decompression tool (like winzip or winrar) or simply using the built-in wizard of most recent Windows versions.

This automatic decompressing activity doesn't affect the registry and doesn't need administrative privileges to be performed. This allows also limited user accounts to install winPenPack.



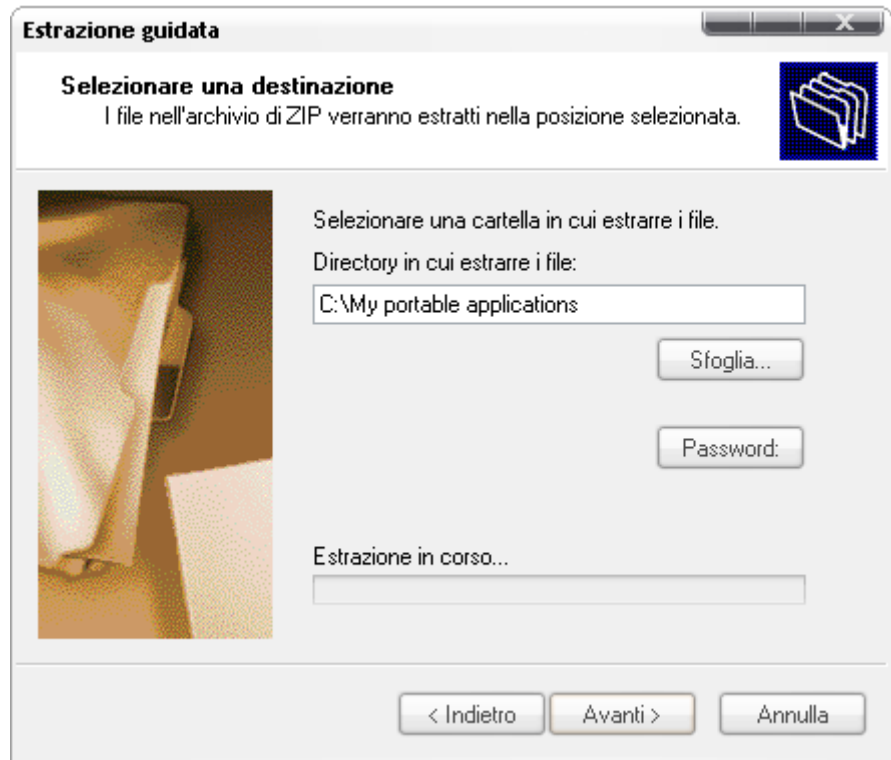
If you want to use the collection from USB pendrive, is better to install the software in the root of the pendrive (i.e.: G:\ or H:\ and not G:\Programs). The pendrive must have enough free space.

#### *Extraction on pendrive:*



If you want to use winPenPack, instead, from hard disk, DON'T copy files and folders directly in the main root (**C:\** or **D:\**); is preferable to create a subfolder (i.e.: **C:\Personal\_Folder\...**) and extract there winPenPack files. Subfolder name can be any.

Extraction on hard disk:



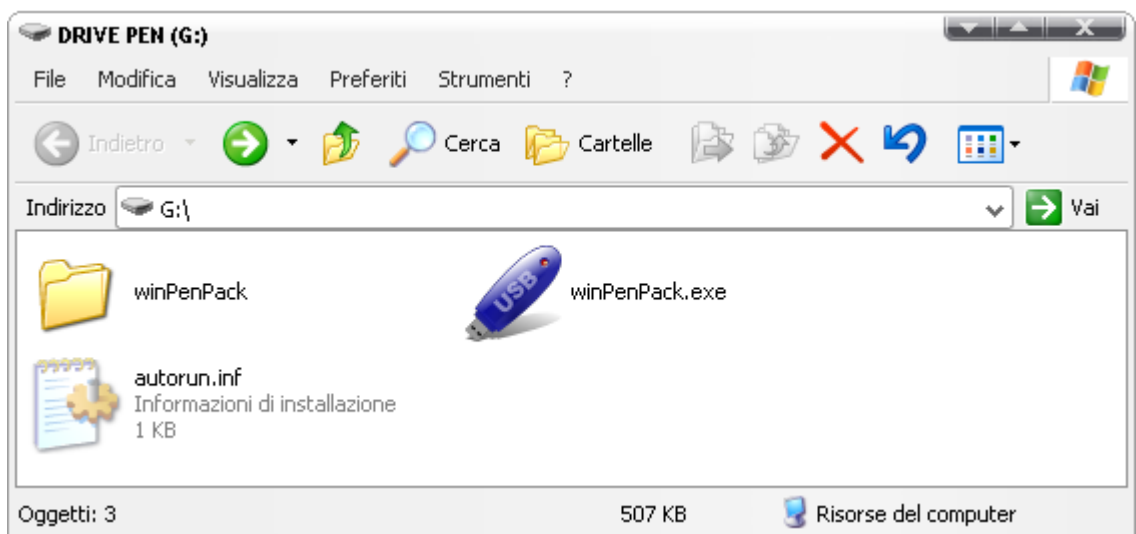
As depicted above, the collection can be used either from USB pendrive or from hard disk. In first case, the launcher will automatically create the hidden file called *autorun.inf* for the automatic start. In second case, instead, *autorun.inf* file will not be created, because not necessary.

**Note:** the file *autorun.inf* will be created only after *winpenpack.exe* first run.

If free space on the pendrive is not enough to contain the complete WinPenPack collection, and pendrive is formatted with FAT file system, you can format your pendrive from Windows choosing the FAT32 file system: after this, you could recover on pendrive more free space.

Once the setup procedure is finished, the "**winPenPack**" folder and the **winPenPack.exe** will be installed in the root of your Pen Drive.

See in picture *autorun.inf* file created just after first run of *winPenPack.exe*



## 2. How winPenPack menu works

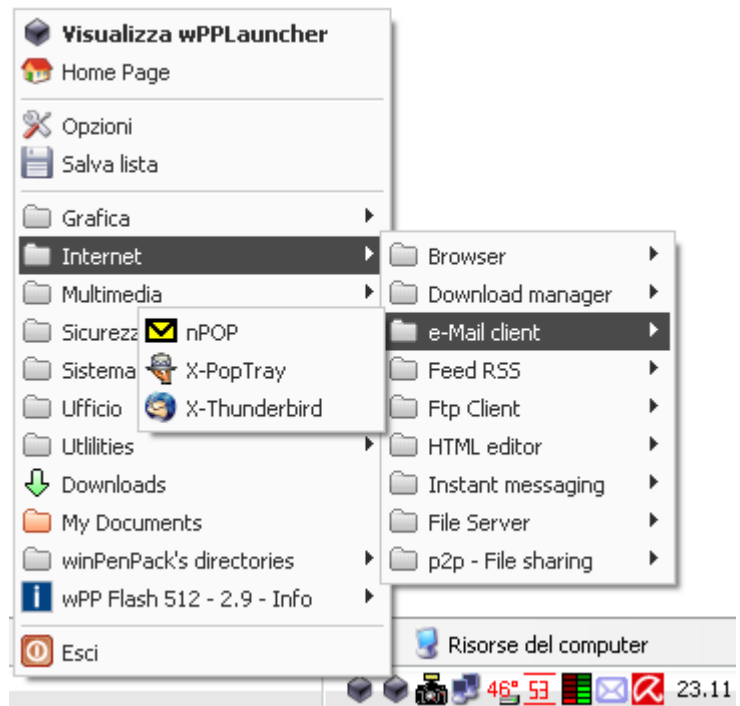
To start using winPenPack, you need to run winpenpack.exe



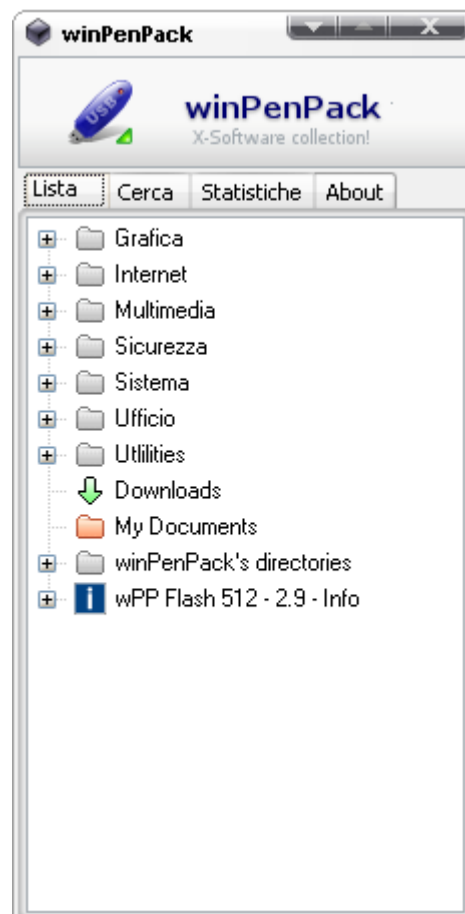
With a double click on this file, a new icon will appear in your System Tray. This icon will be shown with different colours, depending on winPenPack packages.



With a Left-click on this icon, a tree menu very similar to "Windows Quick Launch", divided in categories, folders and subfolders, will appear. From here is possible to start each application



With a "double-click" on winPenPack System Tray icon, main menu window will open. From here is possible to personalize and modify every category, folder and application data.



### 3. winPenPack Programs

All winPenPack included programs are portable. They do not require installation and are immediately available. Every program saves its settings on pendrive (or, if installed on hard disk, just under winPenPack folder). They do not write anything either in user folders (*C:\Documents and Settings\User\_name\Application Data* or *C:\Documents and Settings\User\_name*) and Windows registry. Once they have been configured by the user (e-mail accounts, single program preferences, internet favorites, etc.), they will preserve all configurations on any host PC they will be executed, and also independently from unit letter (i.e. H:\ or F:\) of disk (pendrive or hard disk) from where winPenPack will be executed.

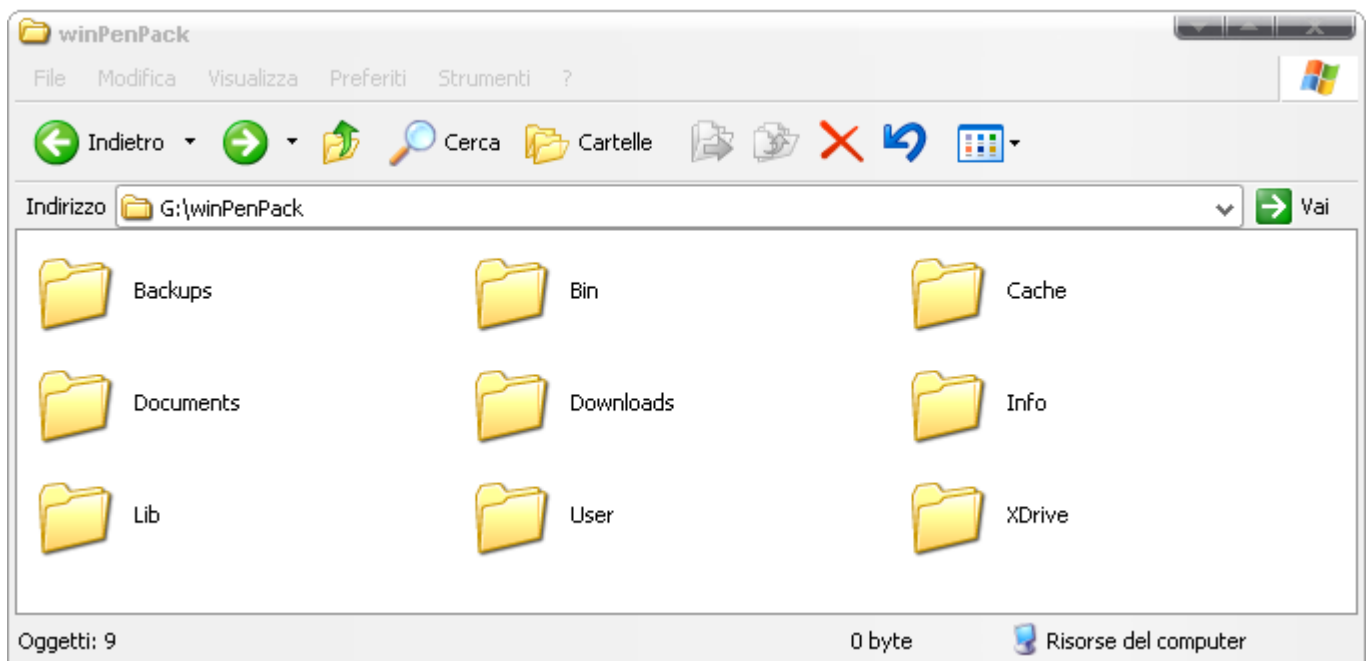
In particular, where allowed by program structure, predefined folders of programs are already set. For example, for X-Mule, *\incoming* and *\temp* folders will point to *winPenPack\Downloads\Incoming* and *winPenPack\Downloads\Temp* respectively. Also, for X-WackGet and X-OrbitDownloader, downloads folders are set on *winPenPack\Downloads\WackGet* and *winPenPack\Downloads\Orbit* respectively; for X-Scribus, Documents folder is set on *winPenPack\Documents\Scribus*. Of course, also in this case, all these paths are independent from host PC and winPenPack disk unit letter.

winPenPack contains two main software categories: **Portable Software** and **X-Software**. Portable software are natively portable programs. Natively means "that save their settings only in their folder and don't write anything on registry"; in winPenPack folder structure, any Portable Software saves its settings into *winPenPack\Bin\Program\_Name* folder.

X-Softwares are programs natively NOT portable, portabilized by winPenPack Team by mean of universal launcher X-Launcher. They have, so, to work in "portable mode", through redirecting user directories or exporting registry keys. Usually, they save their settings into *winPenPack\User\Program\_Name* folder, but, exceptionally, they could save their settings into *winPenPack\Bin\Program\_Name*.

### 4. winPenPack folder structure

winPenPack suite is designed to have all needed folders well distinct:

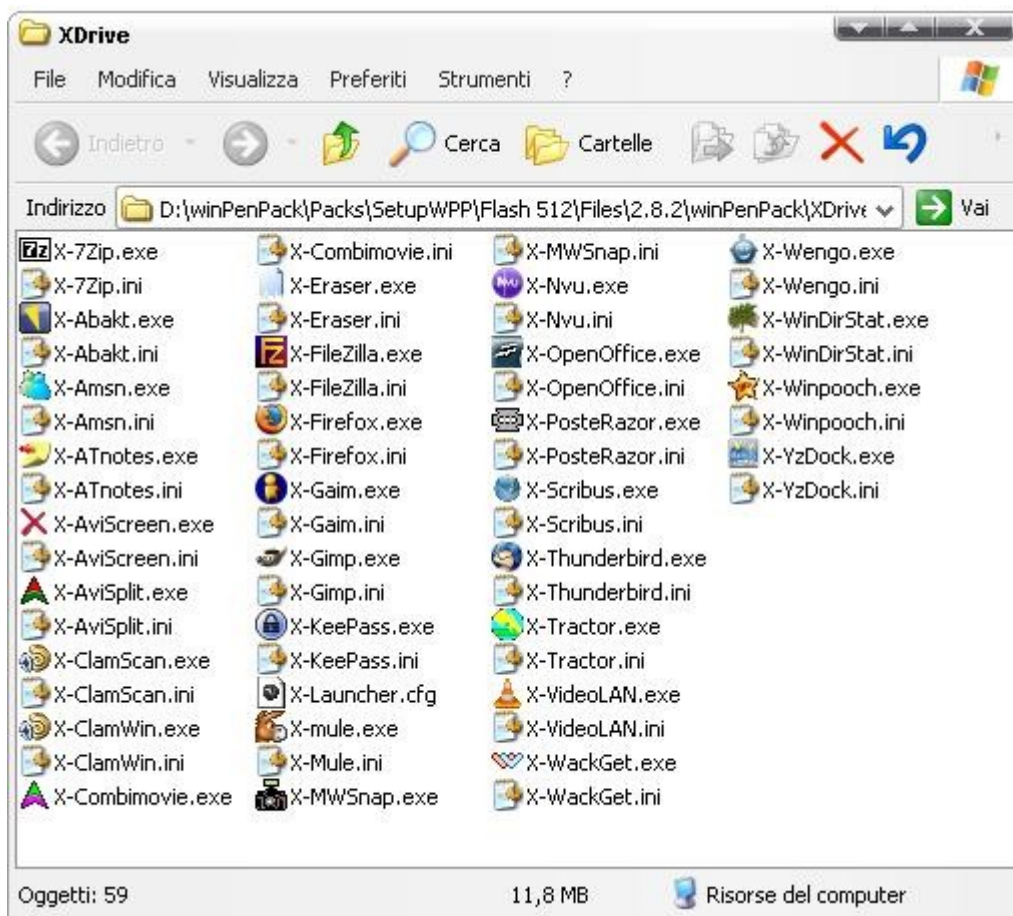


- **Backups**: folder used for backup copies of configurations files, needed by some programs (also winPenPack launcher menu creates backup copies of its configuration XML file, where are written all menu links for each application).
- **Bin**: folder containing all files and executables of each application subdivided into *Program\_Name* folders. In case of new releases, or updates, of softwares, you need to overwrite *Program\_Name* folder (i.e. "Firefox" or "Thunderbird" folder) to update *Program\_Name*.
- **Cache**: folder used as cache area by programs that need this feature.
- **Documents**: folder used to store personal documents, files and data.

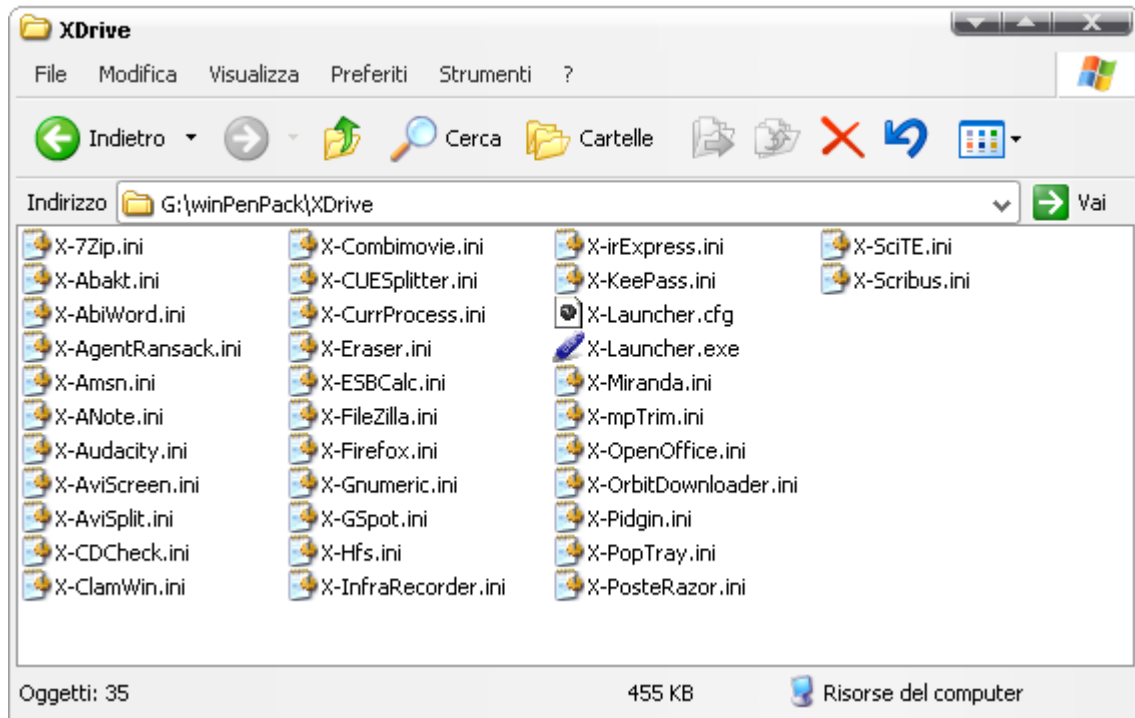
- **Downloads:** folder used by download managers (X-WackGet, X-OrbitDownloader) and P2P programs (i.e. X-Mule) to store internet downloaded files.
- **Lib:** folder used to store EXE or DLL files needed and shared by some different programs (i.e. GTK files used by X- Pidgin and X-Gimp, Java used by X-OpenOffice, X-GeoGebra, X-Freemind or Ghostscript files used by X-Scribus).
- **User:** folder used to store user configurations. A lot of programs in their common usage (normal installation on hard disk), usually save their configurations in %USERPROFILE% directory (this is a hidden folder, usually *C:\Document and Settings\User\_name*), or in %APPDATA% folder (usually *C:\Document and Settings\User\_name\Application Data*). As said above, all Softwares "X" save their configurations into *winPenPack\User\Program\_Name* folder. This is possible using X-Launcher, an universal launcher that makes applications portable redirecting %USERPROFILE% and %APPDATA% paths and saving into *\User\Program\_Name* the exports of program registry keys.
- **XDrive:** folder used to store X-Launcher and all X-Programs *.ini* configuration files. For more info about X-Launcher, [please see this section](#) or [download the X-Launcher](#) .Zip package from Download section of our site.

## 5. XDrive folder and X-Launcher

As already said, *\XDrive* folder contains X-Launcher and all X-Programs *.ini* configuration files. *\XDrive* folder contains also *X-Launcher.cfg* that set package file system, editable preferably only by expert users. *\XDrive* folder is fundamental for personalization of own copy of winPenPack, adding or removing programs. Until 2.8.2 winPenPack release, *\XDrive* contained one X-Program Launcher and one *.ini* file for each X-Program present in *\Bin* folder:



With 2.8.3 winPenPack release, we made a important modification, mainly to free-up space on pendrive. We use only ONE "X-Launcher" handling all *.ini* files present in *\XDrive* folder. So a single X-Launcher is enough to make portable and starting all programs, through configuration *.ini* files, for each X-Software present in the pack:

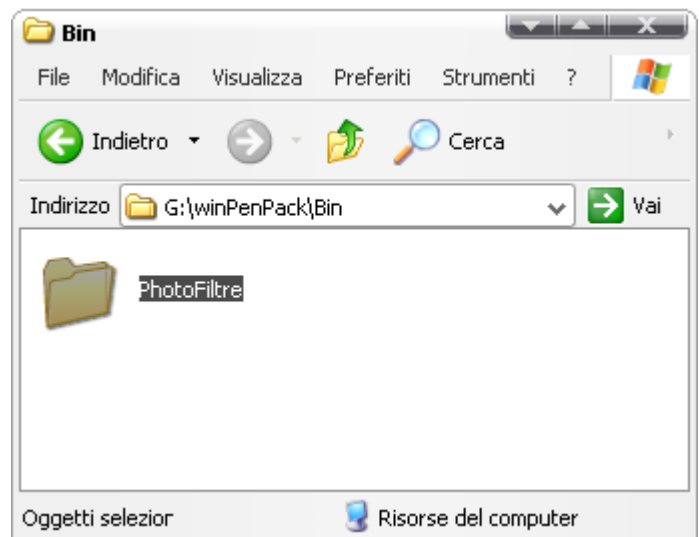


## 6. How to update, add and/or remove programs from winPenPack

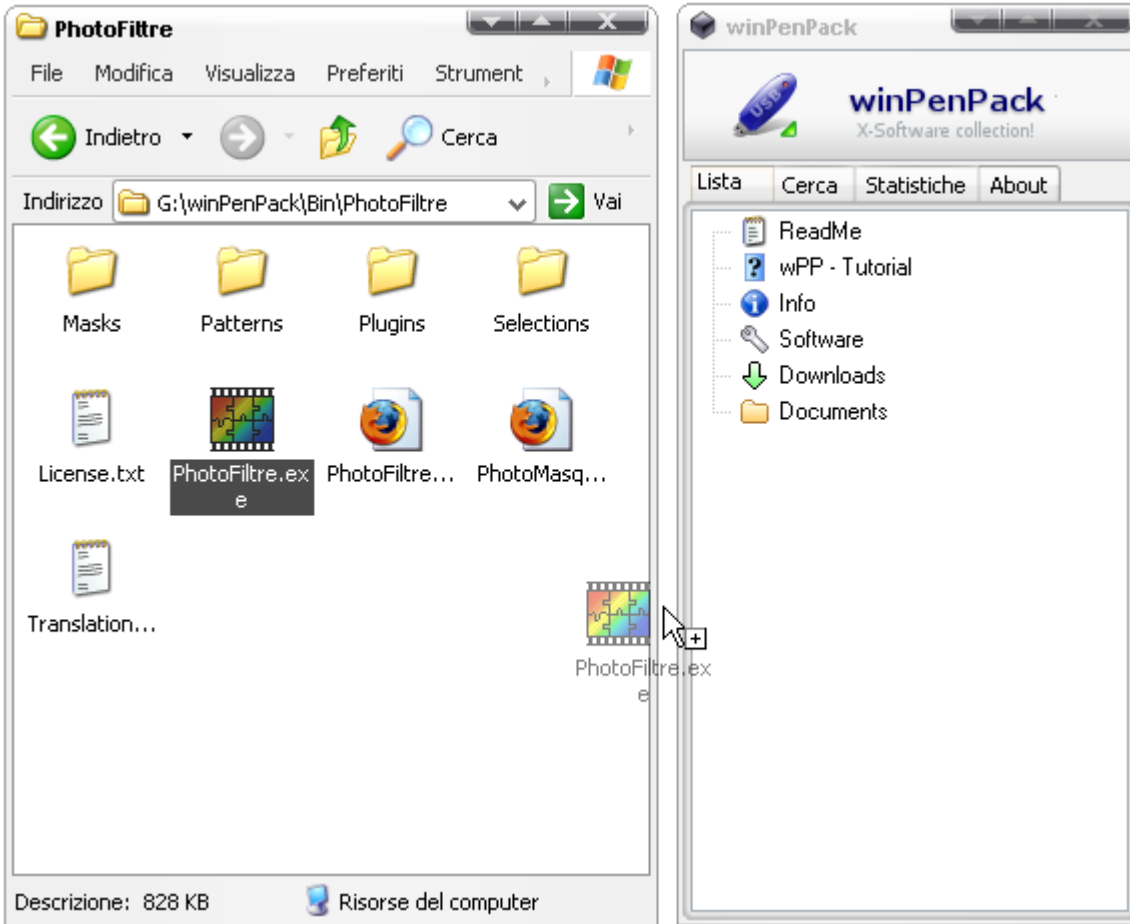
You can personalize very easily your winPenPack collection with a proper customization, always in agreement with our [End user license for use and distribution](#). The more difficult procedure is referred mainly to X-Programs, having an more complicated internal structure. Otherwise, to update portable softwares, there is a simple procedure.

### **Portable softwares**

For adding a Portable Software to winPenPack, first you need to copy the program folder into *winPenPack\Bin* folder :



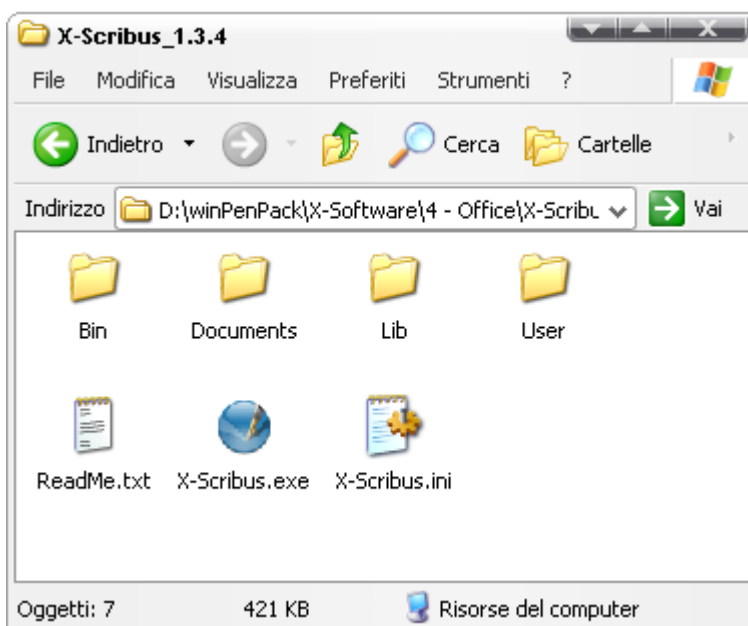
After this, drag the ".exe" file of the program into the main menu window (using drag&drop):



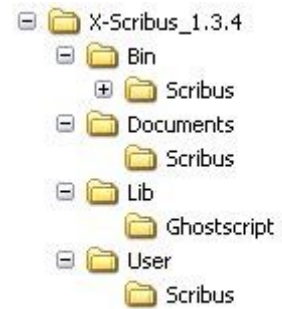
### **X-Softwares**

For adding a X-Program, you must first note that their internal structure is identical to winPenPack one, and so their operating mode: every main program folder is into `\Bin\Program_Name` folder, optional libraries are into `\Lib` folder, settings are saved into `\User\Program_Name` folder, backups are saved into `\Backup\Program_Name` folder, and so on.

As an example, consider **X-Scribus 1.3.4**. It is obvious the relation between winPenPack "distinct folders" structure and X-Software one:



Into `\Bin` folder there is `\Scribus` subfolder (containing Scribus, the whole program), into `\User` there is a `\Scribus` subfolder (that will contain all user settings) and into `\Lib` folder there is a `\Ghostscript` subfolder (containing some libraries needed for correct Scribus execution):

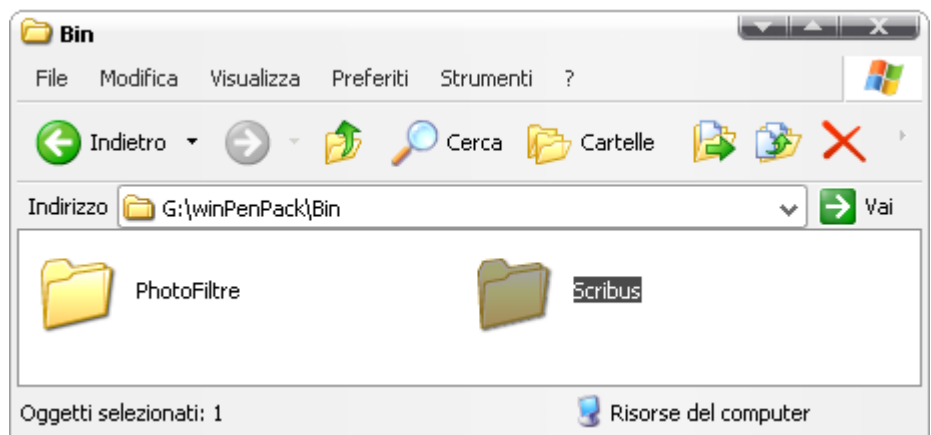


`X-Scribus\Bin\Scribus\`  
`X-Scribus\Lib\Ghostscript\`  
`X-Scribus\User\Scribus\`

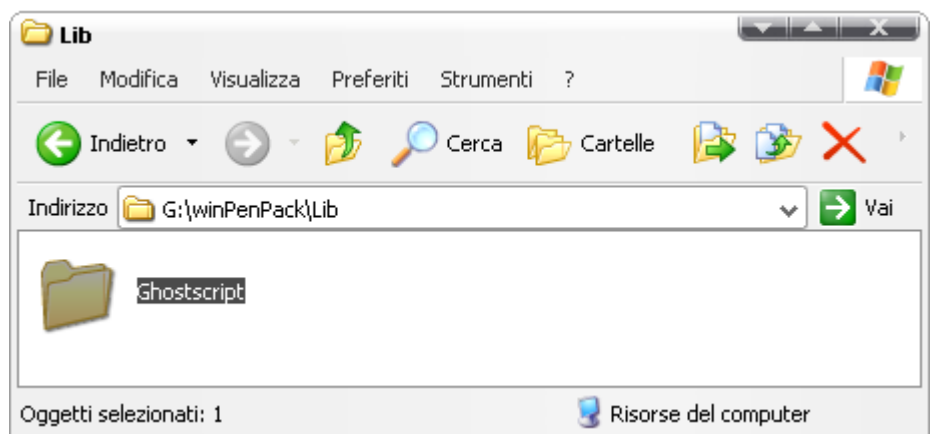
Finally, when you want to add an X-Program into winPenPack, you must find correspondent winPenPack and X-Program folders (mainly `\Bin` and `\Lib`, that contains useful data), and copy these folders (in our case, respectively, `\Scribus` and `\Ghostscript`) into correspondent winPenPack folders (`\Bin` and `\Lib`). You could also consider to copy directly the X-Scribus\_1.3.4 folder contents (N.B. the contents, i.e. what that X-Program folders contains) into `\winPenPack` folder. Due to same folder structure, you will required to confirm overwriting. Answering "Yes, All", `\Bin` and `\Lib` contents will be automatically updated: `\Scribus` folder will be copied into `\winPenPack\Bin` and `\Ghostscript` folder into `\winPenPack\Lib`.

*Here are detailed steps:*

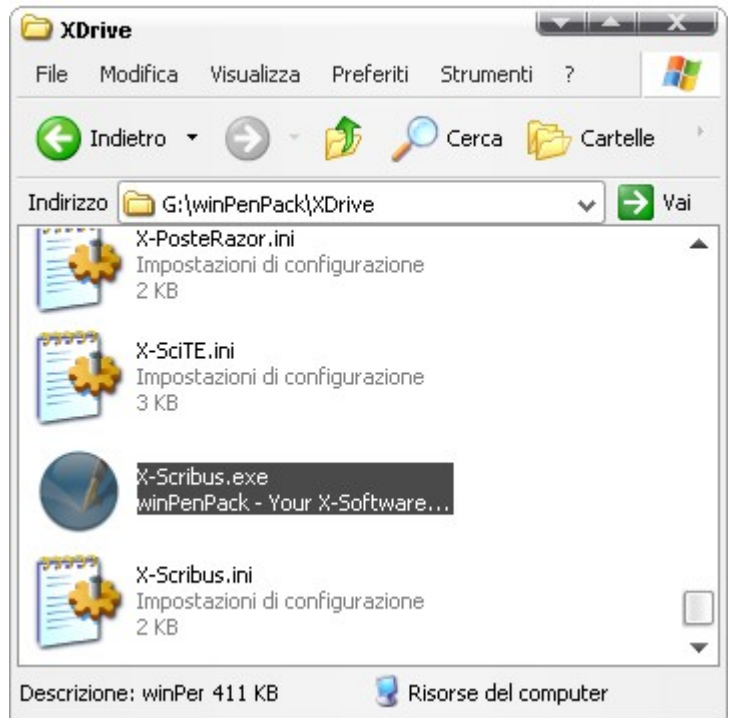
Insert executables folders (`X-Program\Bin\Program_Name`) into `winPenPack\Bin` folder:



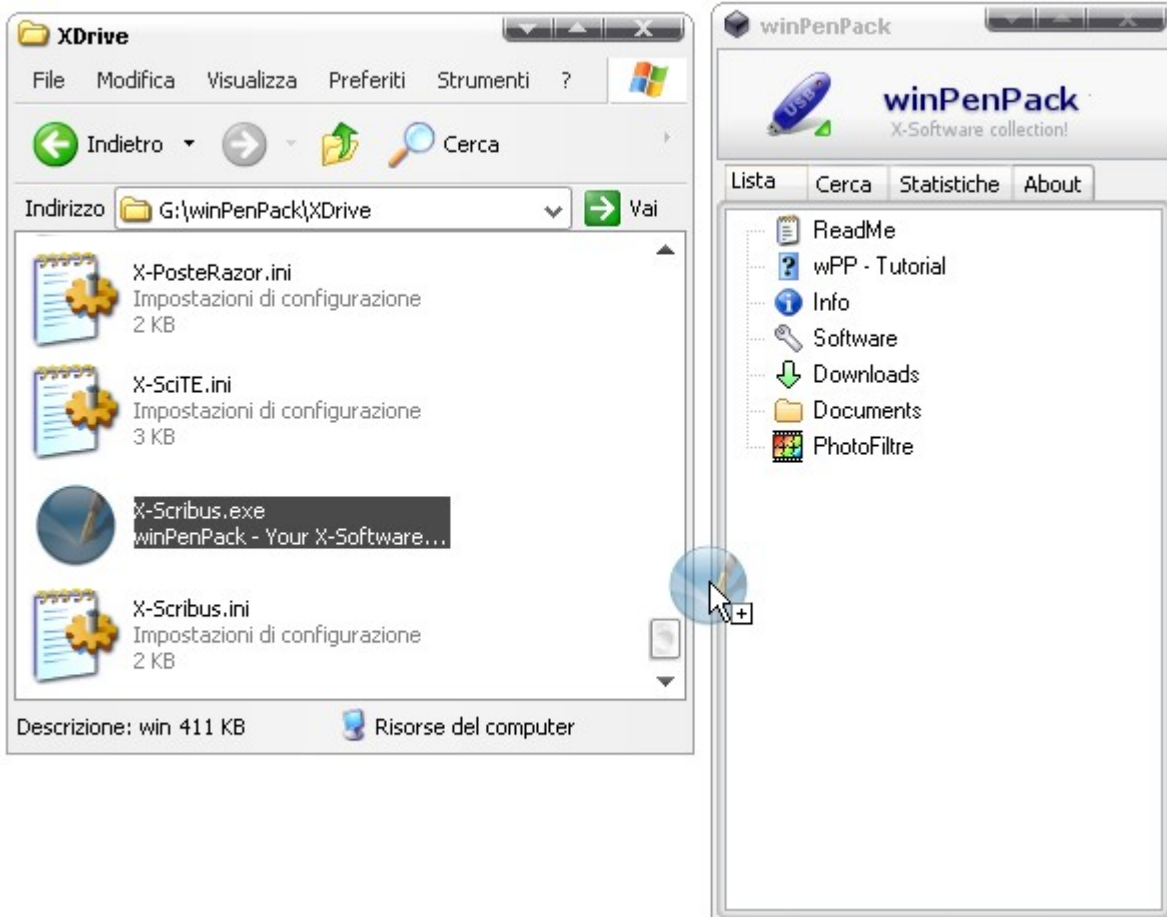
Insert optional folders (shared libraries) from `X-Software\Lib` folder into `winPenPack\Lib`:



Insert program X-Launcher and related *.ini* file into *\XDrive* folder:



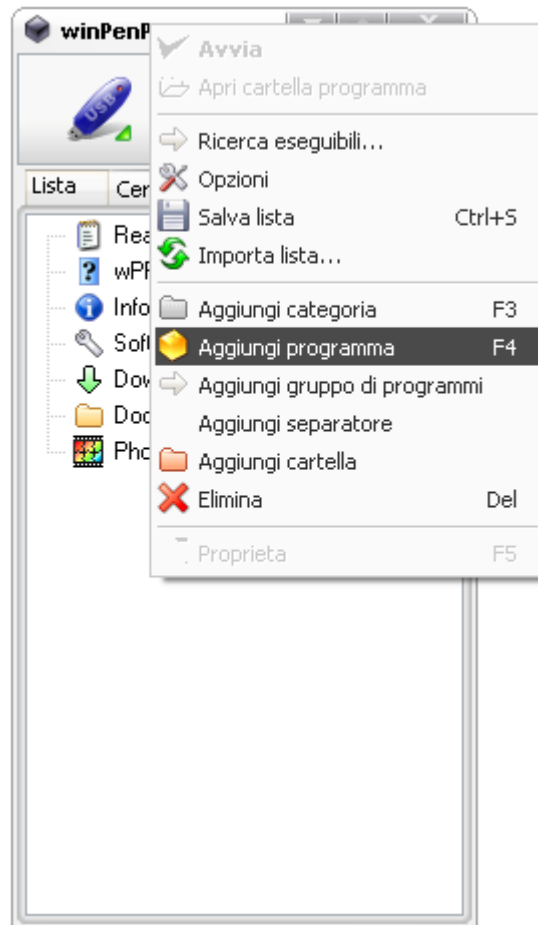
Create a link to *X-Program\_Name.exe* (inserted into *\XDrive* folder) into winPenPack menu, through drag&drop:



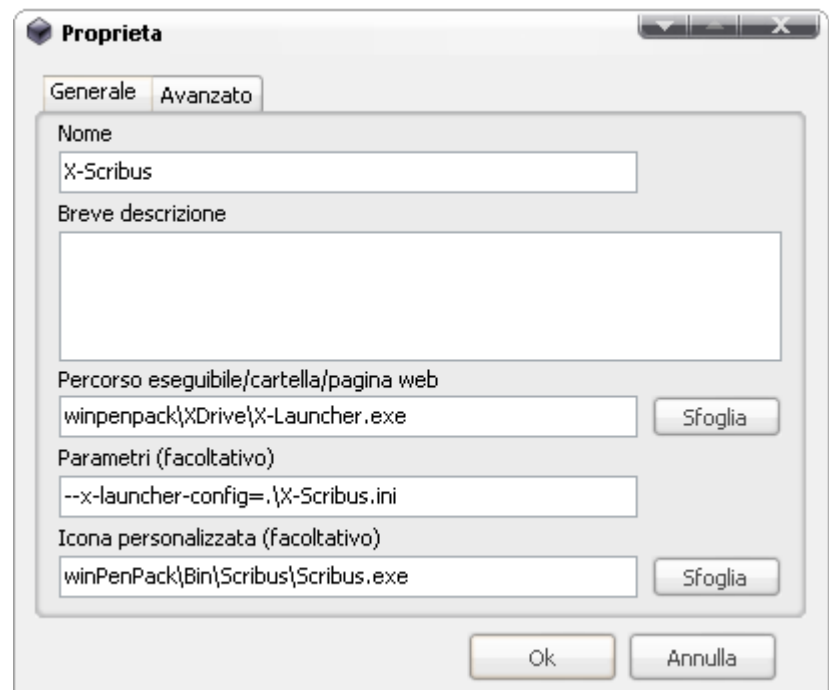
About this, we need to clarify a concept. From version 2.8.3, as said above, all X-Launchers (.exe) files have been deleted from \XDrive folder, making just a single X-Launcher.exe to manage all .ini configuration files. Also old system remains valid (maybe, for experts, more valid), just required more disk space.

Above procedure is the simpler (and suggested) for adding a X-Program to winPenPack. It is also possible to configure winPenPack programs inserting just .ini files into \XDrive folder, without adding also X-Program\_launcher.exe. This could allow to save a lot of disk space (for winPenPack Flash 1Gb, roughly 30 MB).

In this case, X-Program must be added to menu through "Add program (F4)" option:



In the following configuration form, you have to fill "Executable path" field with X-Launcher.exe path and "Parameters (optional)" field with -x-launcher-config option.



You can find more info for customize winPenPack [here](#).

## winPenPack Team

**Danilo Leggieri** [Danix]: winPenPack Project founder, development and web master

**Gabriele Tittone** [Tittoproject]: X-Launcher development

**Matteo Salvi** [El Salvador]: winPenPack Launcher development

**Simone Grassini** [simongr]: press

**Marco Braidotti** [Taf]: translations and international relations

**Massimo D'Angelo** [icemax]: development

**Antonio Renna** [ZioZione]: development

**Ciro Iorio** [Alchimista]: updates software

## Description and License [ [License full version](#) ]

### Description:

winPenPack is a collection of software with "Freeware", "Open Source" and "Free for personal use only" licenses. You can use it without installation on a USB pen drive or Hard Disk. WinPenPack collections are available in the following editions: Flash Essential, Flash 1Gb, Flash Expert, Flash School and Flash Web. Not all software on winPenPack suites is Open Source: for all applications with "Freeware" and "Freeware for personal use only" license we have written authorization for distribution by their respective owners. Any company names, logos, trademarks and product names mentioned or shown on winPenPack website or in software products may be copyright, trademarks or registered trademarks by their respective owners.

### Redistribution:

winPenPack is released under Freeware License.

Redistribution of winPenPack suites is not permitted, with or without modifications, without previous written authorization.

For requests, please write to the author using this [Mail address](#).

The names "winPenPack" and "winPenPack launcher" can not be used to distribute software collections similar to winPenPack. Single programs can be redistributed in compliance with their individual licenses, but winPenPacks collections can be downloaded only from authorized mirrors.

### Modifications of winPenPack:

Modifications of official winPenPacks is not permitted. It is allowed to personalize your winPenPack collection for personal use only, downloading programs from "Portable Softwares" and "X-Softwares" categories of website.

### Disclaimer:

winPenPack is a Free Project. Sale of winPenPack is FORBIDDEN under whichever condition. winPenPack is distributed "AS IS" without ANY WARRANTY. Therefore, no responsibility will be in charge of winpenpack owner for eventual damages deriving to the final user or thirds party using the present material collected in this site. The author will not be liable for any special, incidental, consequential or indirect damages due to loss of data or any other reason. The author can not be held responsible for illegal software or trademarks inserted in the collections by the end user that is not written in the official list present on winPenPack.com or software not granted by the author for winpenpack redistribution. End user can't suggest to be the owner/developer of winPenPacks. It is not possible to demand the exclusive or intellectual property of ours winPenPacks.

This document is released under [Creative Commons License](#)

**Home:** <http://www.winpenpack.com>

**Contact:** [winpenpack@gmail.com](mailto:winpenpack@gmail.com)