



winPenPack
X-SOFTWARE COLLECTION

User guide

1. Description

winPenPack is an homogeneous applications environment executable by any mass storage device, as external hard disks or USB pendrives, and represent a new way to use programs. It includes a collection of Open Source portable software, studied and optimized for been used from removable disks, but perfectly working from hard disk, with the supplemental advantage that programs are quickly executable.

For "*Portable Software*" we intend all programs of immediate use that does not need to be installed, is less intrusive as possible on host PC (don't writes its settings in Windows registry, nor in user folders) and can be easily carried from a PC to another through any portable memory device, as USB pendrives or removable hard disks.

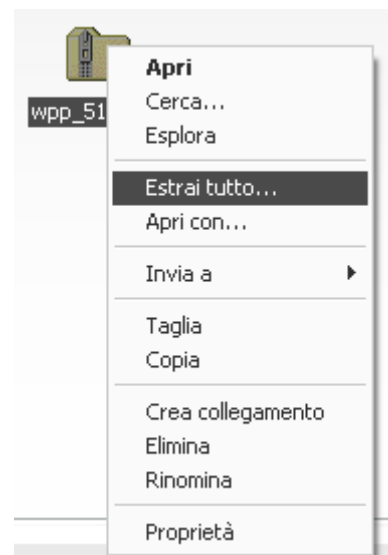
Portable software contained in winPenPack does not require to be installed: in fact, all portable programs can be launched directly from USB pendrive (or from any folder of hard disk) and are managed by a handy menu, similar to Windows Quick Launch: the winPenPack Launcher. Inserting the USB pendrive into a free USB port of PC, user will have immediately all programs, already configured and ready to be executed. It will be as user have its own PC always with him: internet browser with all favorites and personal passwords, e-mail client with all accounts perfectly configured, ftp client with server list always updated, image processing programs, chat clients, utilities for PC maintenance and security. All user needs, always within reach.

As said above, winPenPack and all its programs can be also used directly from hard disk. Also in this case, nothing have to been installed: simply copy winPenPack in a folder. After this, is possible to use immediately any program, choosing among the others.

2. Download and setup

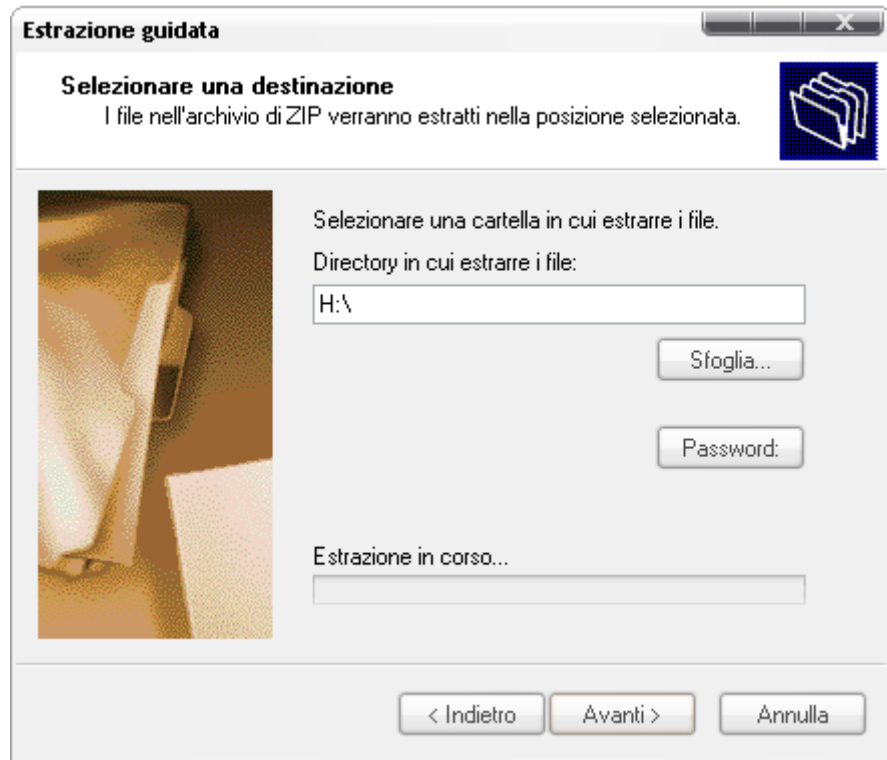
Once you have downloaded one of the **winPenPack** editions from the [Download](#) section, you need to extract program files and dirs using any compression/decompression tool (like WinZIP or WinRAR) or simply using the built-in wizard of most recent Windows versions.

This automatic decompressing activity doesn't affect the registry and doesn't need administrative privileges to be performed. This allows also limited user accounts to install winPenPack.



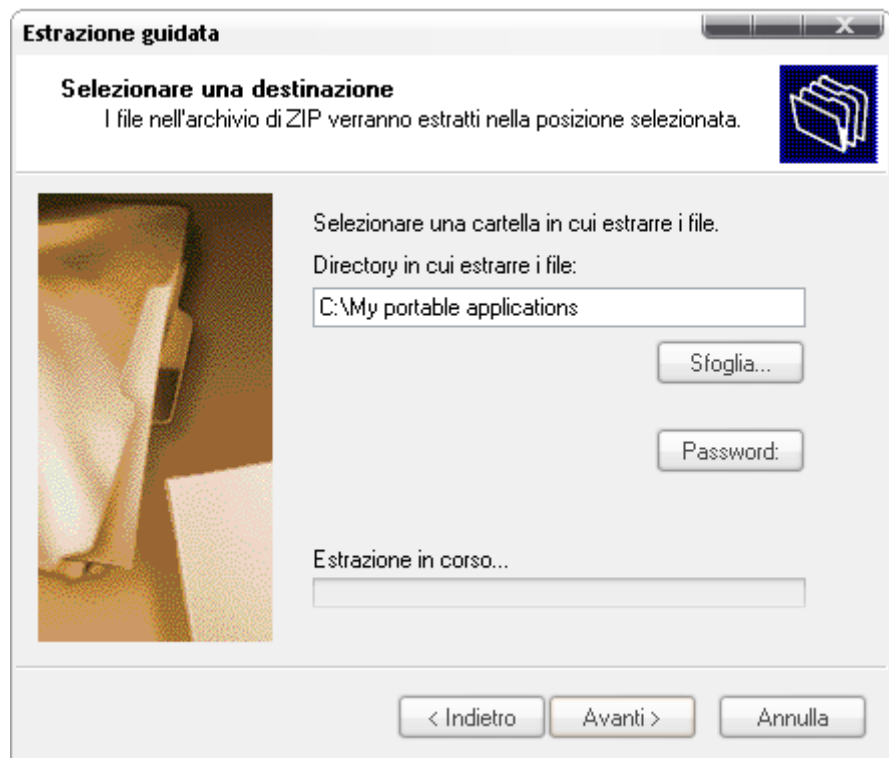
If you want to use the collection from USB pendrive, is better to install the software in the root of the pendrive (i.e.: **G:** or **H:** and not **G:\Programs**). The pendrive must have enough free space.

Extraction on pendrive:



If you want, instead, to use winPenPack from hard disk, DON'T copy files and folders directly in the main root (**C:** or **D:**); is preferable to create a subfolder (i.e.: **C:\Personal_Folder\...**) and extract there winPenPack files. Subfolder name can be any.

Extraction on hard disk:

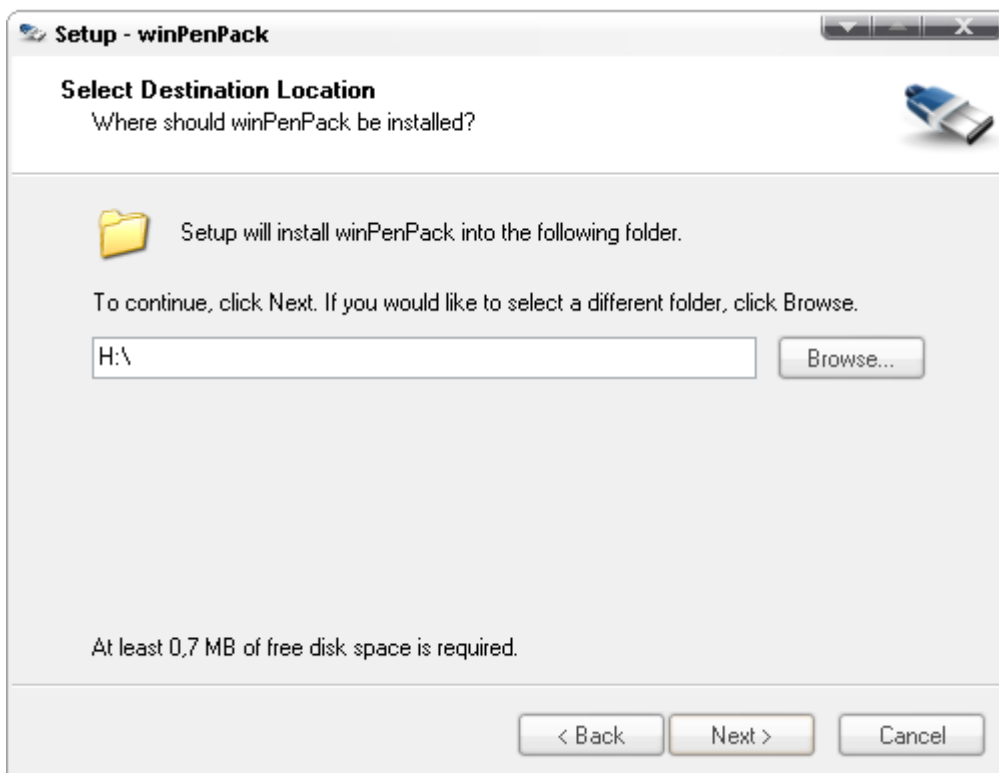


Analogous procedure can be followed for installing winPenPack through setup. Execute setup.exe (it needs administrative privileges on host PC).

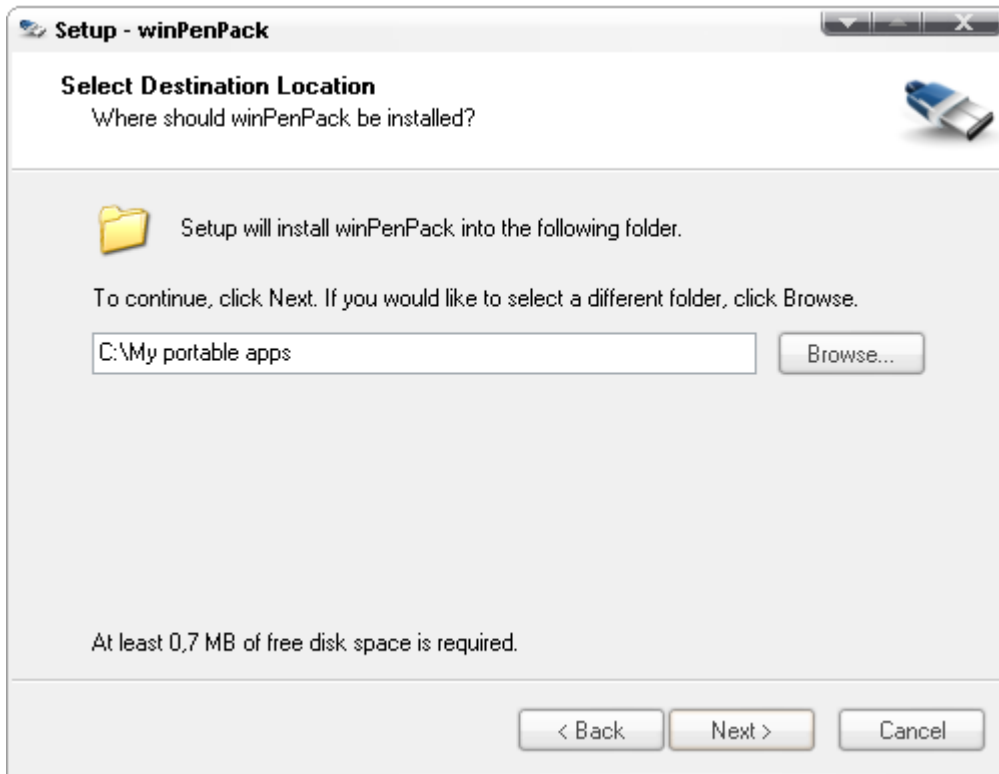




Installation on pendrive (indicate root folder):



Installation on hard disk (indicate a folder and NOT the root folder of hard disk):



3. First run and usage

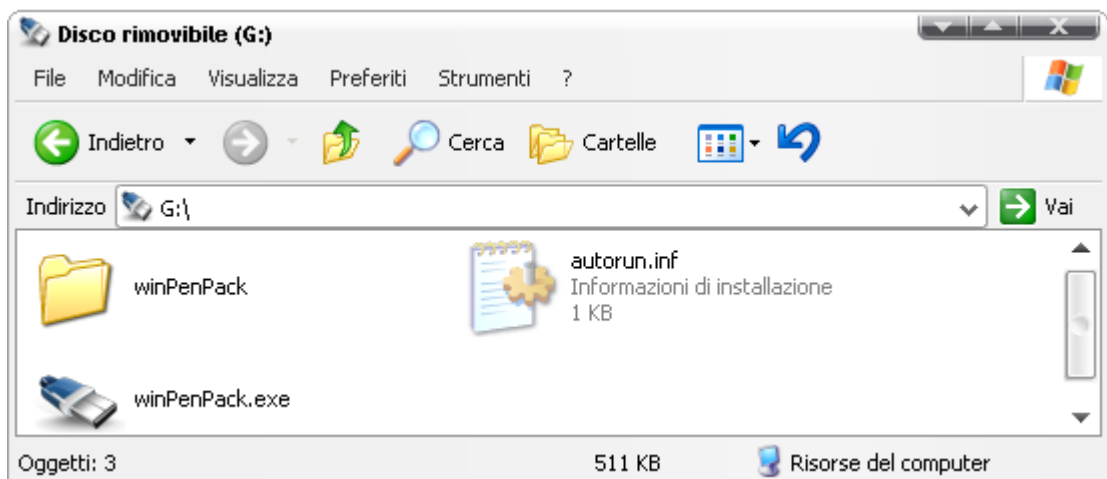
As depicted above, the collection can be used either from USB pendrive or from hard disk. In first case, the launcher will automatically create the hidden file called *autorun.inf* for the automatic start. The menu, in fact, recognizes automatically "winPenPack.exe" path, that, in this case, must be in the root of pendrive (i.e. **G:**\ or **H:**\). In second case, instead, *autorun.inf* file will not be created because winPenPack will must be used from a subfolder and not directly from hard disk root (root folder) of a partition, so it is not necessary.

Note: the file *autorun.inf* will be created only after *winpenpack.exe* first run.

Can happen that free space on pendrive s not enough to completely contain winPenPack. Generally, is preferable to choose a winPenPack release that leave a lot of free space on pendrive after installation (as suggested in download page of winPenPacks) because all savings (program settings and profiles, documents, downloads) will be done on pendrive itself. In any case, if user wants to use a winPenPack release with size similar to pendrive free space, and free space on the pendrive is not enough to contain also all user data, user can format pendrive from Windows choosing either FAT or FAT32 file systems: one of these actions could recover on pendrive more free space.

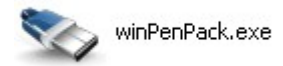
Once the setup procedure is finished, the "**winPenPack**" folder and the **winPenPack.exe** will be found in the root of pendrive.

Picture show autorun.inf file created just after first run of winPenPack.exe



4. How winPenPack menu works

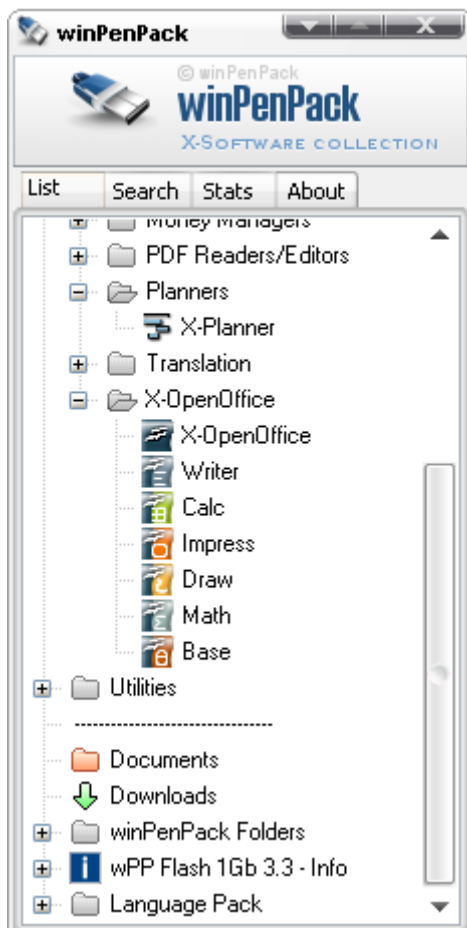
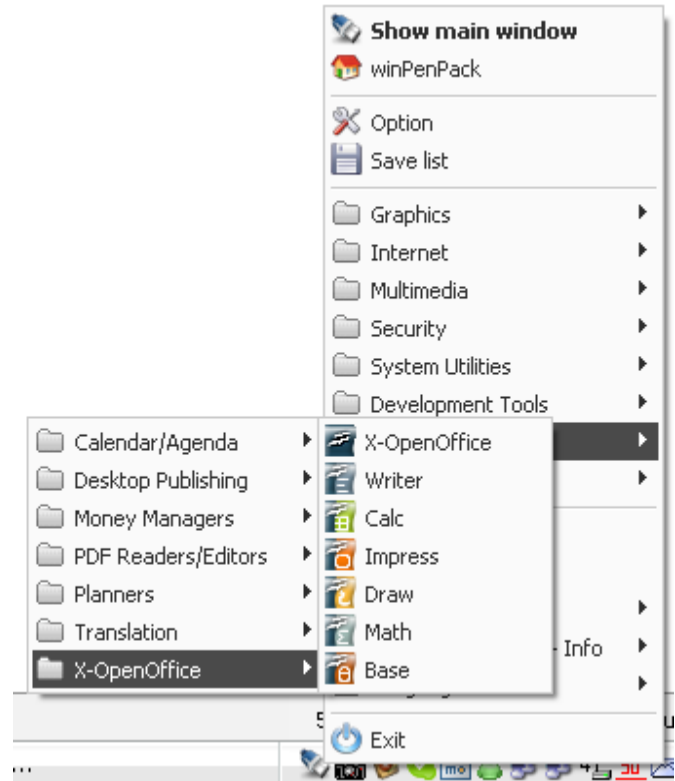
To start using winPenPack, you need to run winpenpack.exe



With a double click on this file, a new icon will appear in System Tray.



With a Left-click on this icon, a tree menu very similar to "Windows Quick Launch", divided in categories, folders and subfolders, will appear. From here is possible to start each application and access to menu options and predefined winPenPack folders. (see right image)



With a "double-click" on winPenPack System Tray icon, main menu window will open. From here is possible to personalize and modify every category, folder and application data. (see left image)

5. winPenPack Programs

All winPenPack included programs are portable. They do not require complex installation procedures and are immediately available until first run. Every program saves its settings on pendrive (or, if installed on hard disk, just under winPenPack folder). They do not write anything either in user folders (*C:\Documents and Settings\User_name\Application Data* or *C:\Documents and Settings\User_name*) and Windows registry. Once they have been configured by the user (e-mail accounts, single program preferences, internet favorites, etc.), they will preserve all configurations on any host PC they will be executed, and also independently from unit letter (i.e. H:\ or F:\) of disk (pendrive or hard disk) from where winPenPack will be executed.

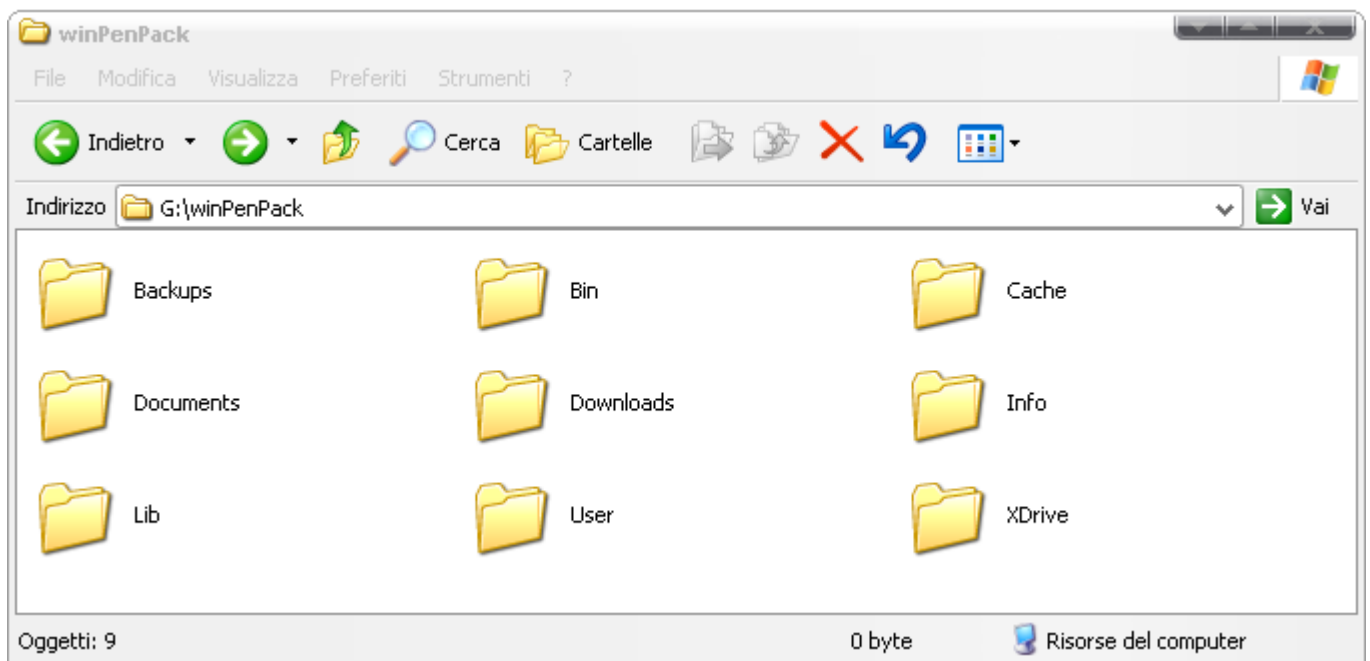
In particular, where allowed by program structure, predefined folders of programs are already set. For example, for X-Mule, *\incoming* and *\temp* folders will point to *winPenPack\Downloads\Incoming* and *winPenPack\Downloads\Temp* respectively. Also, for X-WackGet, downloads folders are set on *winPenPack\Downloads\WackGet*; for X-Scribus, Documents folder is set on *winPenPack\Documents\Scribus*. Of course, also in this case, all these paths are independent from host PC and winPenPack disk unit letter.

winPenPack contains two main software categories: **Portable Software** and **X-Software**. Portable software are natively portable programs. Natively means "that save their settings only in their folder and don't write anything on registry"; in winPenPack folder structure, any *Program_Name* Portable Software saves its settings into *winPenPack\Bin\Program_Name* folder.

X-Softwares are programs natively NOT portable, conceived and portabilized by winPenPack Team by mean of universal launcher X-Launcher. They have, so, to work in "portable mode", through redirecting user directories or exporting registry keys. Usually, they save their settings into *winPenPack\User\Program_Name* folder (**note**: exceptionally, some programs could save their settings into *winPenPack\Bin\Program_Name* folder).

6. winPenPack folder structure

winPenPack applications environment is designed to have a "separate-folders" structure, each one for performing distinct tasks:

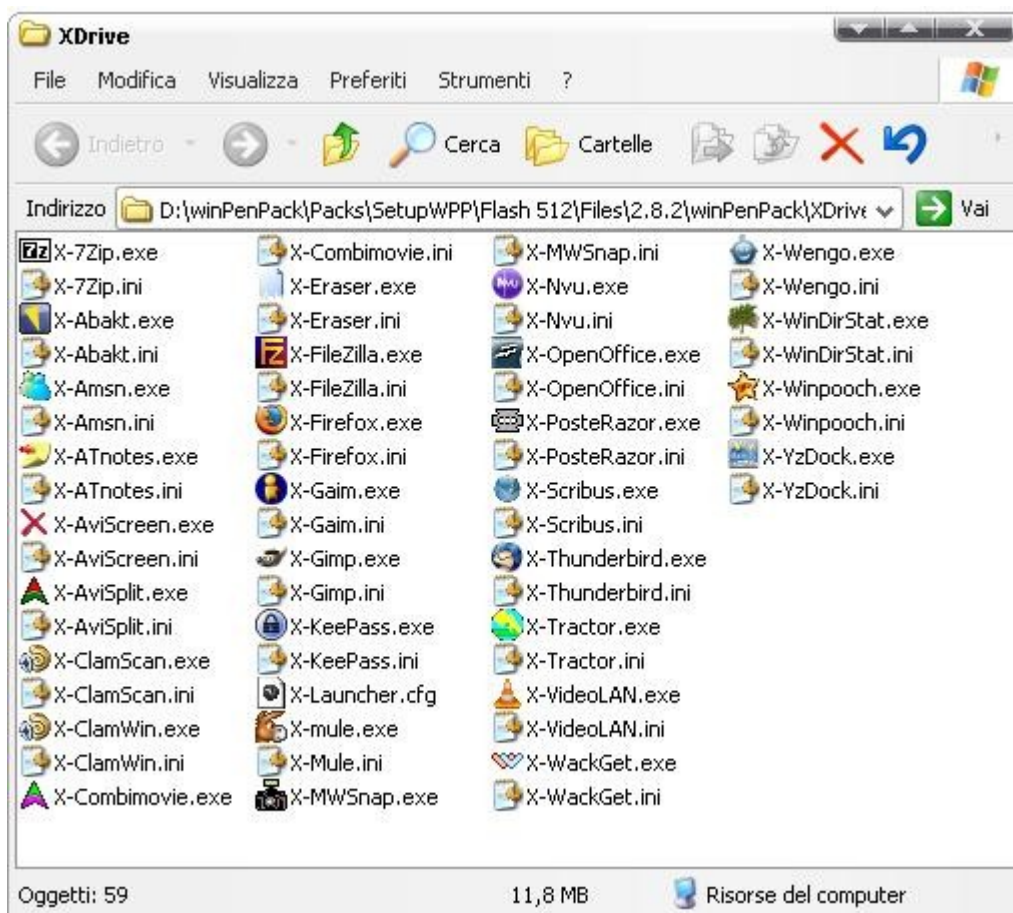


- **Backups:** folder used for backup copies of configurations files, needed by some programs (also winPenPack launcher menu creates backup copies of its configuration XML file, where are written all menu links for each application).
- **Bin:** folder containing all files and executables of each application (belonging to X-Software and Portable Software categories) subdivided into *Program_Name* folders. In case of manual updating, deleting or adding softwares, user need to act into *\Bin\Program_Name* folder, for, respectively, update, delete or add the folder containing original program files.
- **Cache:** folder used as cache area by programs that need this feature.
- **Documents:** folder used to store personal documents, files and data.

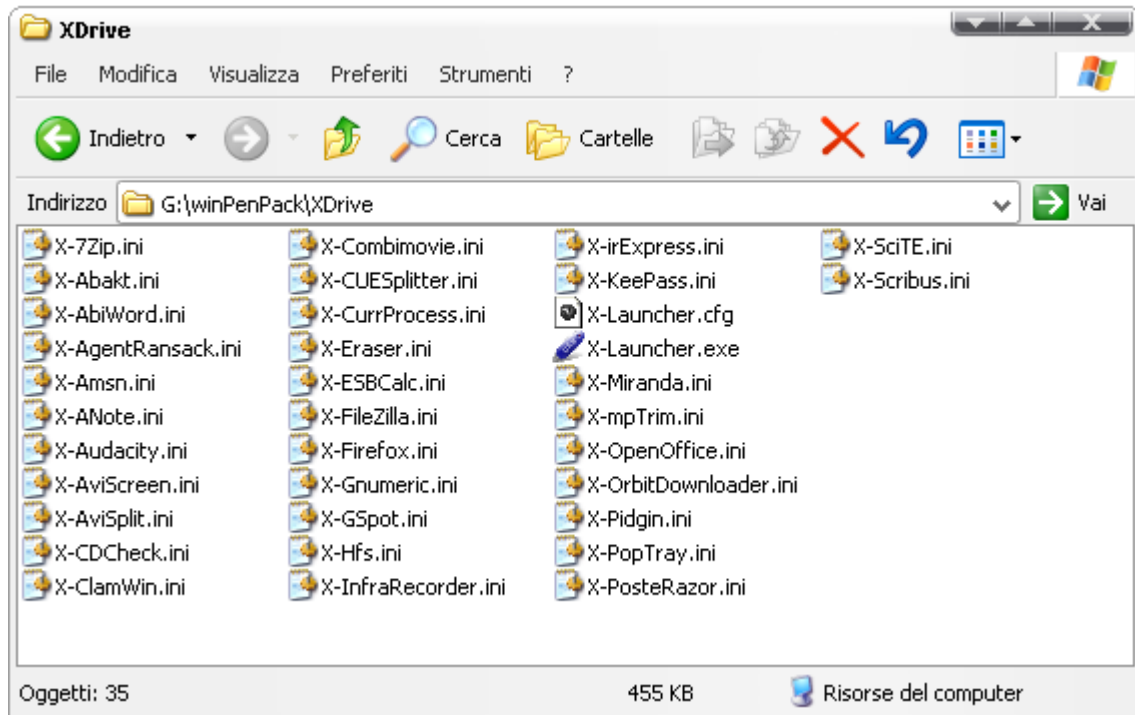
- **Downloads:** folder used by download managers (X-WackGet) and P2P programs (i.e. X-Mule) to store internet downloaded files.
- **Lib:** folder used to store EXE or DLL files needed and shared by some different programs (i.e. GTK libraries used by X- Pidgin and X-Gimp, Java used by X-OpenOffice, X-GeoGebra, X-Freemind or Ghostscript library used by X-Scribus).
- **User:** folder used to store user configurations. A lot of programs in their common usage (normal installation on hard disk), usually save their configurations in %USERPROFILE% directory (this is a hidden folder, usually *C:\Document and Settings\User_name*), or in %APPDATA% folder (usually *C:\Document and Settings\User_name\Application Data*). As said above, all X-Softwares save their configurations into *winPenPack\User\Program_Name* folder. This is possible using X-Launcher, an universal launcher that makes applications portable redirecting %USERPROFILE% and %APPDATA% paths under \winPenPack folder and saving into \User\Program_Name the exports of program registry keys.
- **XDrive:** folder used to store X-Launcher and all X-Programs .ini configuration files. For more info about X-Launcher, [please see this section](#) or [download the X-Launcher](#) .Zip package from Download section of our site.

7. XDrive folder and X-Launcher

As already said, \XDrive folder contains all X-Launchers and X-Programs .ini configuration files, necessary for assuring programs portability. \XDrive folder contains also *X-Launcher.cfg* that sets package file system, to be edited preferably only by expert users. \XDrive folder knowledge is fundamental for personalization of own copy of winPenPack, adding or removing programs. \XDrive folder contains one X-Program Launcher and one .ini file for each X-Program present in \Bin folder:



In some winPenPack releases, we made an important (experimental) modification, mainly to free-up space on pendrive. We make only ONE "X-Launcher" to handle all .ini files present in \XDrive folder. So a single X-Launcher was enough to make portable and starting all programs, through configuration .ini files, for each X-Software present in the pack:

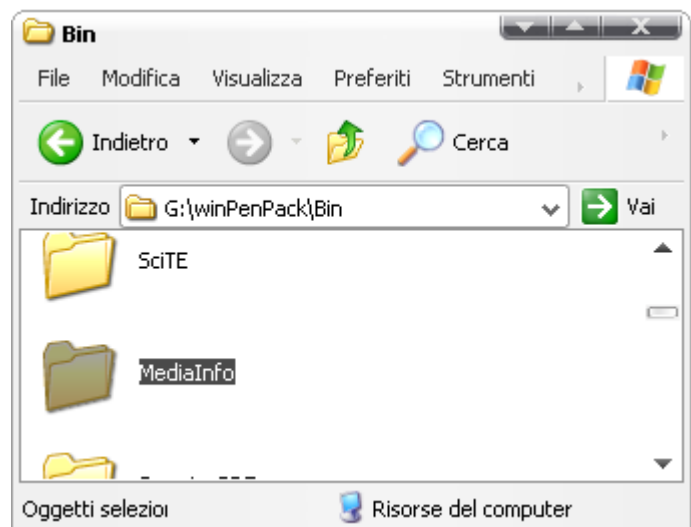


However, due to highly complex methods necessary for define associations between X-Softwares, until 3.2 release we returned to original method (one X-Launcher per X-Program).

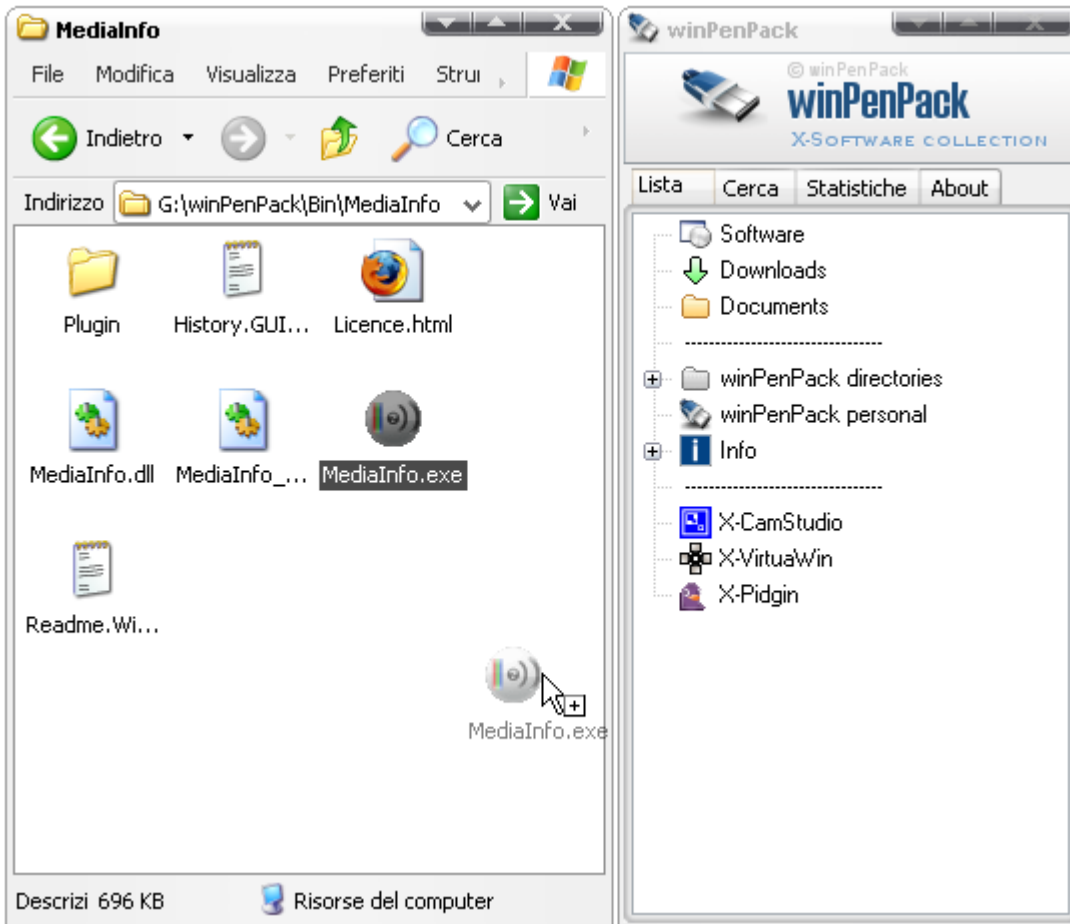
8. How to update, add and remove programs from winPenPack

Portable software

For adding a Portable Software to winPenPack, user first need to copy the program folder into *winPenPack\Bin* folder :



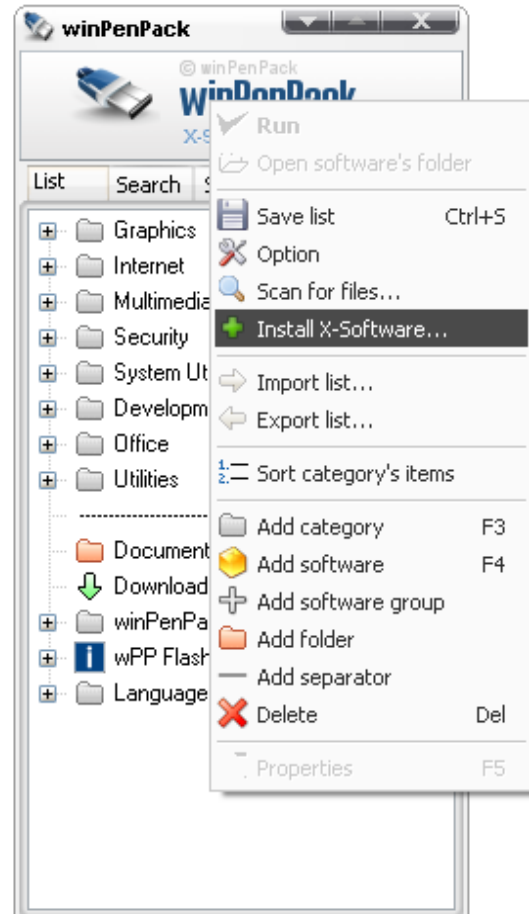
After this, user can drag executable file of the program into the main menu window (using drag&drop). The program will so visible in menu and runnable from it:



X-Software

Starting from 3.3 winPenPack release, users can easily install X-Programs, both into menu and winPenPack, using "Install X-Software" menu items option. The menu, automatically, extract and import X-Program .zip contents, after downloading them from winPenPack site [download](#) section.

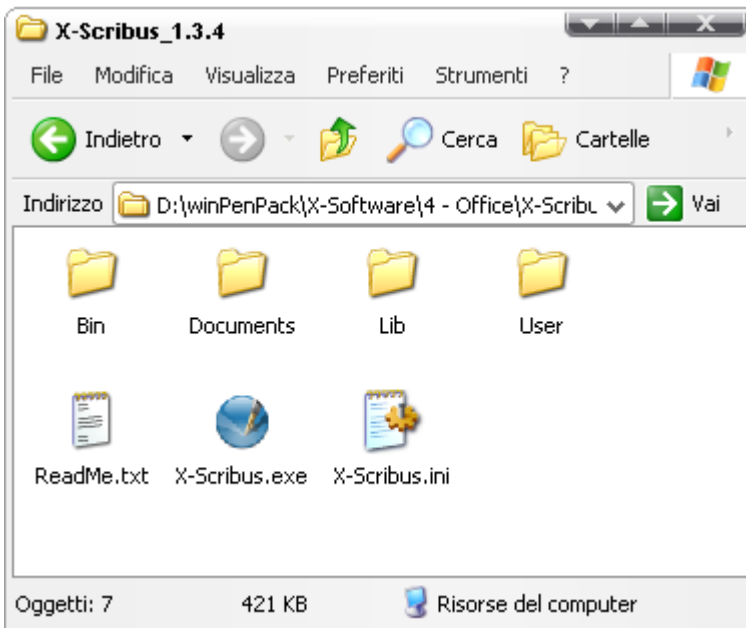
Is also possible to update X-Programs to their latest release, simply installing new release in the same place of the old one.



Following procedure, describing in details how to manual adding X-Programs to menu, is NO MORE necessary, since is referring to old winPenPack releases, where automatic installation was not already expected. Also if is almost sure that users will prefer to use "Install X-Software" menu option for installing programs into menu, we leave it in this document for sake of completeness and also for describing X-Programs (and so winPenPack) operation.

For manual adding a X-Program to menu, users must first note that their internal structure is identical to winPenPack one: every program main folder is into `\Bin\Program_Name` folder, optional libraries are into `\Lib` folder, settings are saved into `\User\Program_Name` folder, backups are saved into `\Backup\Program_Name` folder, and so on.

As an example, consider **X-Scribus 1.3.4**. It is obvious the relation between winPenPack "distinct-folders" structure and X-Software one:



Into `\Bin` folder there is `\Scribus` subfolder (containing Scribus, the original program), into `\User` there is a `\Scribus` subfolder (that will contain all user settings) and into `\Lib` folder there is a `\Ghostscript` subfolder (containing some libraries needed for correct Scribus execution):

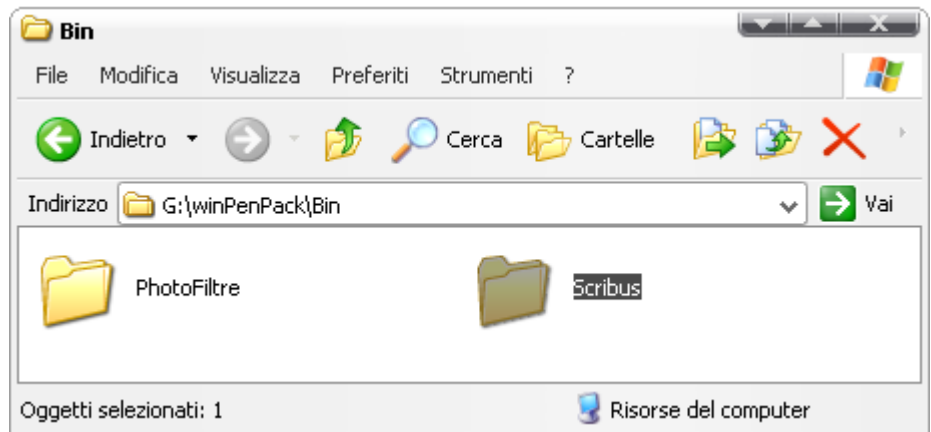
```
X-Scribus\Bin\Scribus\
X-Scribus\Lib\Ghostscript\
X-Scribus\User\Scribus\
```



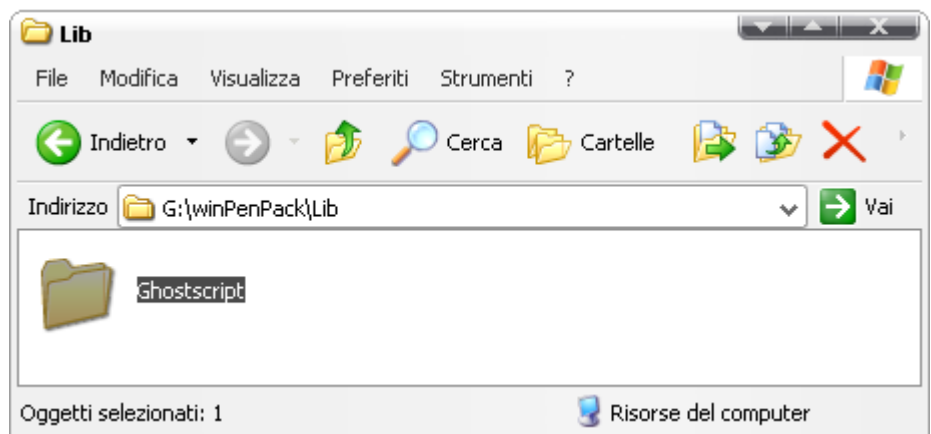
Ultimately, when users wants to manually add an X-Program into winPenPack, they must find correspondent winPenPack and X-Program folders (mainly `\Bin` and `\Lib`, that contains useful data), and copy these folders (in our case, respectively, `\Scribus` and `\Ghostscript`) into correspondent winPenPack folders (`\Bin` and `\Lib`). You could also consider to copy directly the X-Scribus_1.3.4 folder contents (**N.B.:** the contents, i.e. what that X-Program folders contains) into `\winPenPack` folder. Due to same folder structure, you will required to confirm overwriting. Answering "Yes, All", `\Bin` and `\Lib` contents will be automatically updated: `\Scribus` folder will be copied into `\winPenPack\Bin` and `\Ghostscript` folder into `\winPenPack\Lib`.

Here are detailed steps:

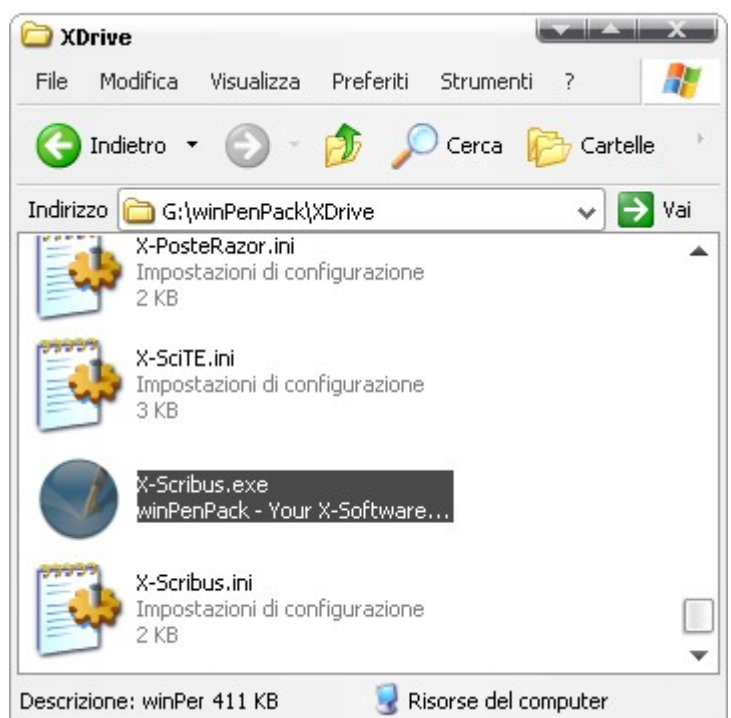
Insert executables folders (*X-Program\Bin\Program_Name*) into *winPenPack\Bin* folder:



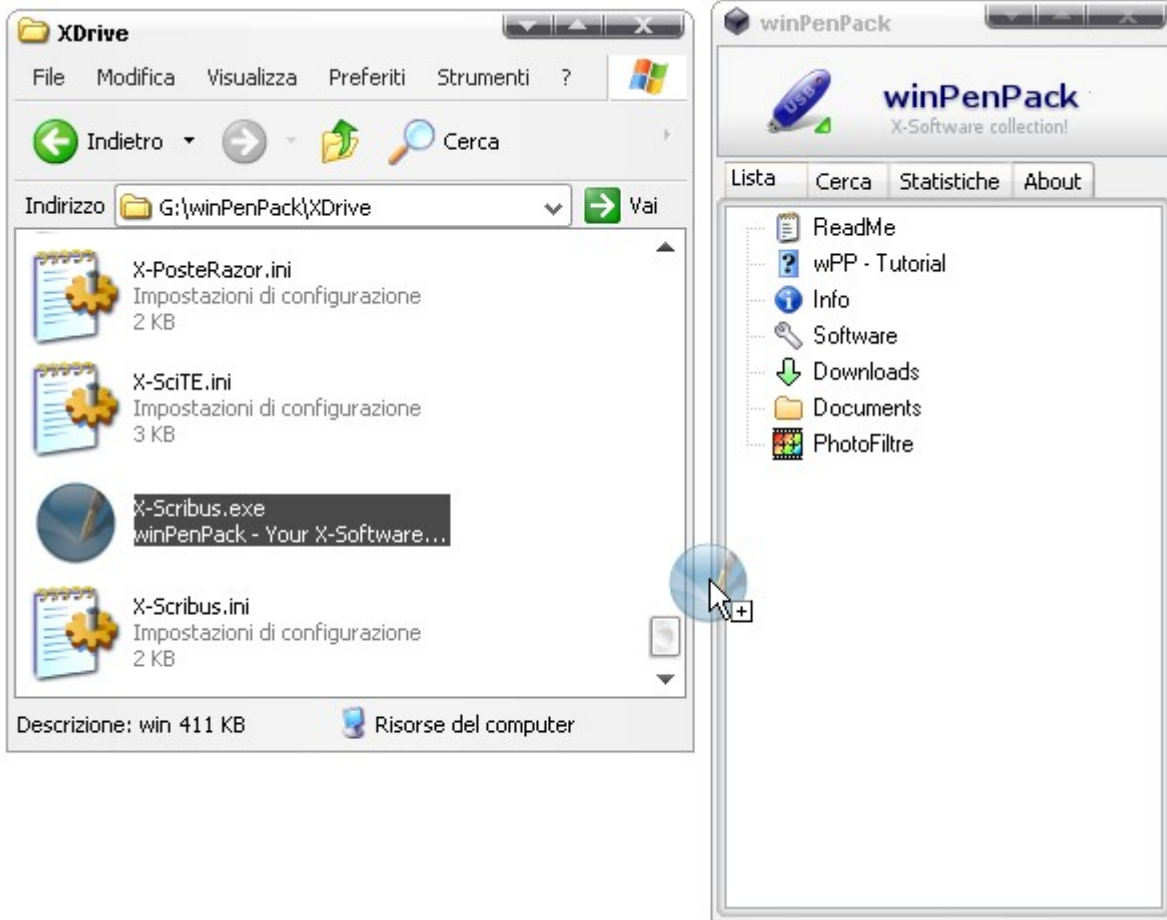
Insert optional folders (shared libraries) from *X-Software\Lib* folder into *\winPenPack\Lib*:



Insert program X-Launcher and related *.ini* file into *\XDrive* folder:



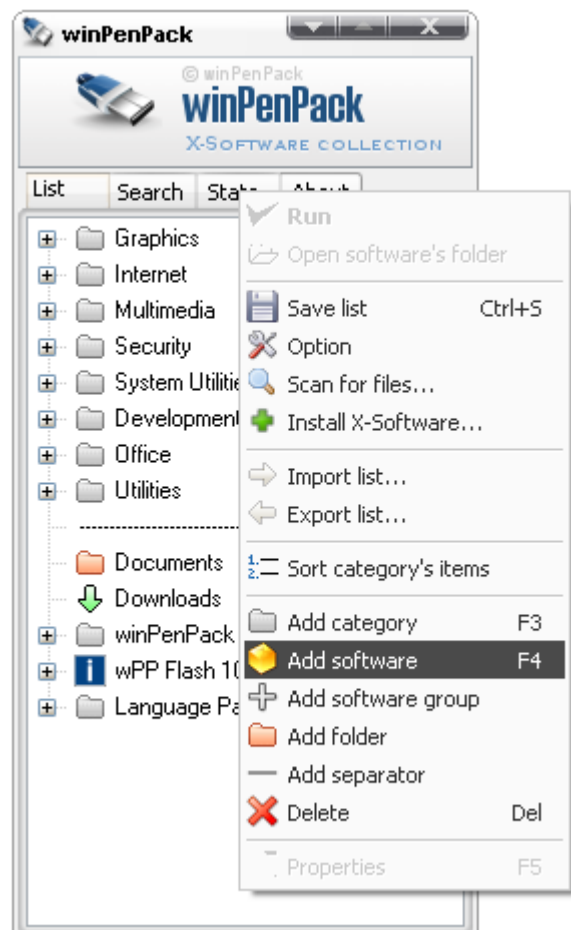
Create a link to *X-Program_Name.exe* (inserted into *\XDrive* folder) into winPenPack menu, through drag&drop:



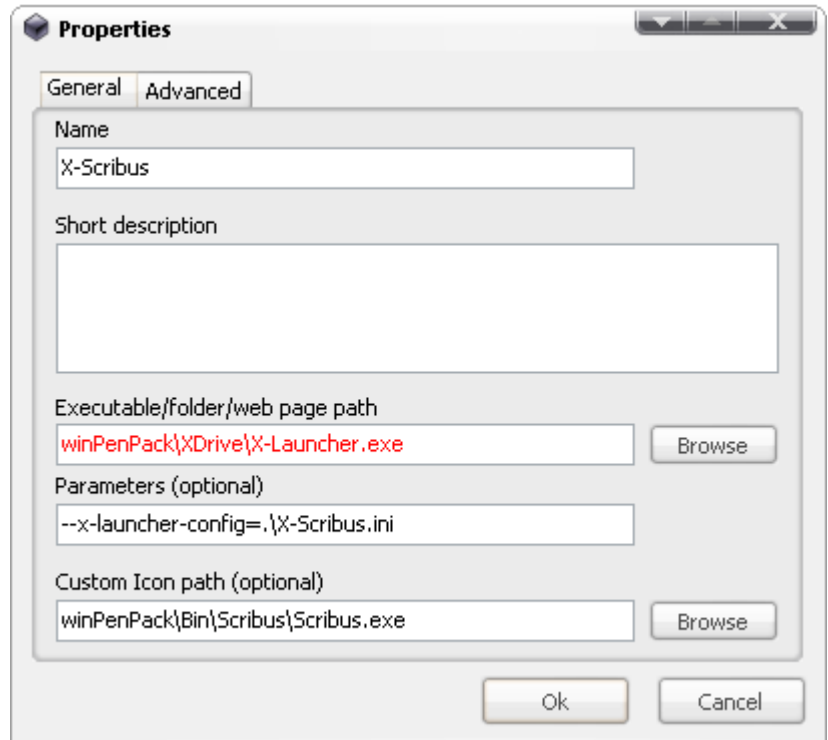
About this, we need to clarify a concept. In some winPenPack versions, as said above, all X-Launchers (.exe) files have been deleted from *\XDrive* folder, making just a single X-Launcher.exe to manage all .ini configuration files. Also old system remains valid (maybe, for experts, more valid), just required more disk space.

We assume that above procedure is the simpler (and suggested) for manual adding a X-Program to winPenPack. It is also possible to configure winPenPack programs inserting just .ini files into *\XDrive* folder, without adding also X-Program_launcher.exe. This could allow to save a lot of disk space (for winPenPack Flash 1Gb, roughly 25 MB).

In this case, X-Program must be manually added to menu through "Add program (F4)" option:



In the following configuration form, you have to fill "Executable path" field with X-Launcher.exe (the only one needed, present into \Xdrive folder) path, and "Parameters (optional)" field with "--x-launcher-config" option.



You can find more info for customize winPenPack [here](#).



winPenPack

X-SOFTWARE COLLECTION

Home: <http://www.winpenpack.com>

Contact: winpenpack@gmail.com

Support: [Forum](#)

Development Team

Danilo Leggieri (Danix): winPenPack project founder and maintainer, software development and portabilization, web development

Gabriele Tittone (tittoproject): X-Launcher development, portabilization and support

Matteo Salvi (El Salvador): winPenPack Launcher development and support

Antonio Renna (ZioZione): software development, support, translations and international relations

Ciro Iorio (Alchimista): updates software

Massimo D'Angelo (icemax): software development and support

Marco Braidotti (Taf): users support and testing

Simone Grassini (simongr): users support

Collaborators

Romeo Cafaro (Rcs): updates software, press

Gaspere Grana (grangas): docs and menus optimization

Support

Roberto Viola (<http://www.sdlbasic.altervista.org>): web support and software development

Lamberto Tedaldi (<http://www.officinepixel.com>): free software, license and copyright support

Credits and thanks

Andrea Giammarchi (<http://pampa.phpsoft.it/>): Pampa web server developer/customizer for winPenPack

Alexandre Moore (<http://sa-ki.deviantart.com/>): pendrive icons

e107Italia (<http://www.e107italia.org>): website system

Graphiser (<http://www.graphiser.org>): mirror

Uncle Dan's Corner (<http://www.uncledan.it/>): mirror

Pietrolonardo (<http://www.pietrolonardo.it/>): mirror

Marvho (<http://www.marvho.com>): mirror

Scuola Media 5-12 Sassari (<http://www.scuolamedia5-12.com>): mirror

Translators

Fraggle: german

TaZmaniak: french

Urius: russo/russian

Anderson Brazuca: spanish

Taborsky Lubos: czech

C.Felipe de S. Tenreiro: portuguese

Xyrk0: slovak

Prasit Kaephukhio: thai

Dritan Cami: albanian

License (full version)

winPenPack is a free project created in 2005, having, as main objective, research and development of portable software. The project is coordinated and directed by a development Team, assisted by a community of users and contributors, providing their contribute at no charge. The project collects then documents, scripts, ideas and, generally, material protected by author's rights and software release under different licenses. The use of softwares and contents present on our website is subject to the acceptance of the license agreement terms and conditions.

Preamble

Any program is released under a license that defines terms of use and redistribution. Commercial programs cannot be used without purchasing a regular license. For "Freeware for personal use" programs, free usage is allowed, but users are liable to purchase a license for other than private uses. Software released under "Freeware" license can be freely and legally used anywhere, also in schools or offices. Lastly, programs released under open source (GPL, MPL, LGPL, etc.) licenses are liable only to some restrictions, relative to modify and redistribution. Their main characteristic is that, indeed to forbid, they allow not only to use and copy, but also to modify, upgrade, elaborate original software versions.

winPenPack, in the viewpoint of development and diffusion of free portable software, orients primarily its interest over open source, freely modifiable, then "portabilizable" software. Including in collections exclusively software released under the open source licenses, freely usable anywhere (schools, government administration, offices, etc.) by anyone, all official winPenPacks are definitely Free Software. However, since open source licenses are different among them, each software is covered by its corresponding license. The applications environment "winPenPack" as a whole is covered by the GNU General Public License.

If the author of a software included in winPenPack collections considers that this was included in the collections without having the requirements of Free Software, please report it to Development Team that will make the appropriate adjustments.

winPenPack definition

winPenPack is a collection of open source software that can be copied on USB pendrive or Hard Disk, without installation. WinPenPack Suites are available in the following editions: Flash Essential, Flash 1Gb, Flash School, Flash Web and Flash Game. winPenPack is an ensemble of softwares, documents, initialization files and XML files perfectly integrated together for constitute an homogeneous working applications environment. Every program is subject to its own license; configuration, XML and documentation files created by winPenPack team are released under GNU General Public License.

Redistribution of official winPenPack under unmodified form

winPenPack under unmodified form can be freely distributed as a single standalone file, without limitations and also on mirrors different from official ones, only if paternity of the work is clearly mentioned and acknowledged, referring explicitly to winPenPack as inspirer source (adding always a link to www.winpenpack.com) in publications, newspapers, magazines, web sites and every other information channel.

winPenPack modifications and redistribution under modified form

Permission is granted to anyone to modify a copy or copies of the program or any portion of it, thus forming a derived work based on the program, that can be copied and distributed, stating explicitly that is a modified copy and also each modification date.

Every modification of winPenPack must be done leaving original copyright unchanged, belonging to winPenPack and to software author, and stating explicitly that the derivate work is based on winPenPack, as detailed by GNU General Public License. All derivative works cannot include logos and trademarks belonging to winPenPack, splash screens and any other reference, leading to winPenPack, that could confuse the user, with the exception of copyright notes ascribing original work paternity.

Is possible to contact the [Development Team](#) for establish particular collaborations and create customized distributions. Examples are "winPenPack Web", dedicated to [e107Italia](#), became an official edition, or "winPenPack Lawyers", originated by collaboration with [jdaide.it](#) and [legati.com](#) and [winPenPack for Studenti.it](#).

Disclaimer

winPenPack is a Free Project. It identifies a developers, contributors and users community, providing their contribute at no charge. winPenPack is distributed "AS IS" without ANY WARRANTY. Therefore, no responsibility will be in charge of winPenPack author for eventual damages deriving to the final user or thirds party using the software and any object contained into the collections.

winPenPack cannot be responsible of any derivative work. None of derivative works authors will can introduce itself as creator or maker of winPenPack. Is forbidden to claim exclusive or intellectual ownership of winPenPack, belonging to Danilo Leggieri, already covered by author's rights. Is forbidden to use logos and trademarks "winPenPack" and "winPenPack – X-Software collection".

winPenPack usage

End users can:

1. use for free and legally the programs of the collection in any place (home, school, office, etc.);
2. do legal copies of winPenPacks for friends and kin;
3. use winPenPacks for personal projects and initiatives, in the awareness that project copyright is, and remains, property of winPenPack;
4. create, from official winPenPacks, derivative works, stating clearly in a copyright note that they are modified copies based on winPenPack, and excluding all official logos and trademarks, splash screens and any other reference, leading to winPenPack, that could confuse the user.

This document is released under [Creative Commons License](#)